



Copper and aluminum composite terminal

Copper and aluminum composite terminal

Product material: new copper clad aluminum composite material.

Product advantages: strong oxidation resistance, durability, current carrying capacity and stability.

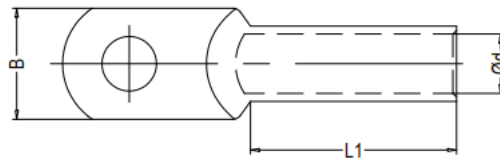
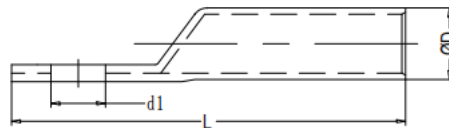
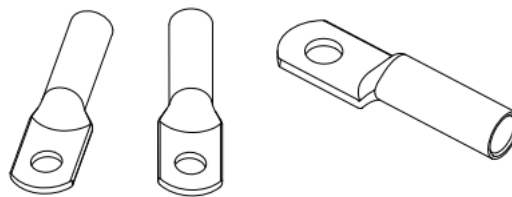
For traditional products, it has better current carrying capacity, safety and stability. Also has metallurgical grade craft

Description: This product is suitable for use in harsh environments, high and low temperature environments.

Copper and aluminum composite terminal



Specification



Copper and aluminum composite terminal

| Model specification | d1 | Dφ | dφ | L | L1 | B |
|---------------------|------|----|-----|----|----|----|
| DTL16-8 | 8.5 | 9 | 6.5 | 68 | 37 | 16 |
| DTL25-8 | 8.5 | 10 | 7 | 70 | 33 | 18 |
| DTL35-10 | 10.5 | 11 | 8.5 | 80 | 36 | 20 |
| DTL50-10 | 10.5 | 12 | 10 | 85 | 38 | 22 |
| DTL70-12 | 12.5 | 14 | 12 | 95 | 43 | 26 |

| | | | | | | |
|-----------|------|----|------|-----|----|----|
| DTL95-12 | 12.5 | 16 | 13.5 | 104 | 46 | 28 |
| DTL120-14 | 14.5 | 18 | 15 | 112 | 49 | 30 |

Product Show



Product Application

